

# Industrial Ethernet Switch - FL SWITCH 1005N



1085039

<https://www.phoenixcontact.com/in/products/1085039>

Please be informed that the data shown in this PDF document is generated from our Online Catalog. Please find the complete data in the user documentation. Our General Terms of Use for Downloads are valid.



Narrow Ethernet switch, five RJ45 ports with 10/100 Mbps on all ports, automatic data transmission speed detection, autocrossing function, and QoS

## Your advantages

- RJ45 ports support a transmission speed of 10/100 Mbps
- QoS-prioritized (Quality of Service) messages
- Local diagnostic indicators with LEDs
- Enhanced traffic prioritization for automation protocols
- PROFINET PTCP filter for reliable communication on PROFINET networks
- Energy-efficient Ethernet in accord. with IEEE 802.3az
- PROFINET Conformance Class A for real-time data exchange
- Auto negotiation and autocrossing detection simplifies installation and setup

## Commercial Data

Item number	1085039
Packing unit	1 pc
Minimum order quantity	1 pc
Note	Made to Order (non-returnable)
Sales Key	DNN
Product Key	DNN116
GTIN	4055626834320
Weight per Piece (including packing)	212 g
Weight per Piece (excluding packing)	131 g
Customs tariff number	85176200
Country of origin	TW

# Industrial Ethernet Switch - FL SWITCH 1005N



1085039

<https://www.phoenixcontact.com/in/products/1085039>

## Technical Data

### Dimensions

Width	22.5 mm
Height	117 mm
Depth	84 mm

### Notes

#### Utilization restriction

EMC note	EMC: class A product, see manufacturer's declaration in the download area
----------	---

### Material specifications

Housing material	Polycarbonate fiber reinforced
------------------	--------------------------------

### Mounting

Mounting type	DIN rail mounting
---------------	-------------------

### Interfaces

#### Ethernet (RJ45)

Number of interfaces	5
Connection method	RJ45
Note on the connection method	Auto negotiation and autocrossing
Transmission speed	10/100 Mbps
Transmission physics	Ethernet in RJ45 twisted pair
Transmission length	100 m (per segment)
Signal LEDs	Data receive, link status
No. of channels	5 (RJ45 ports)

### Product properties

Product type	Switch
MTTF	167.2 Years (MIL-HDBK-217F standard, temperature 25°C, operating cycle 100%)
	1627 Years (SN 29500 standard, temperature 25°C, operating cycle 21%)
	1526 Years (Telcordia standard, 25°C temperature, 21% operating cycle (5 days a week, 8 hours a day))

#### Switch functions

Basic functions	Unmanaged switch
	Autonegotiation
	Store and Forward switching mode
PROFINET conformance class	Conformance-Class A
MAC address table	2k

1085039

<https://www.phoenixcontact.com/in/products/1085039>

Status and diagnostic indicators	LEDs: U <sub>S</sub> , link and activity per port
Additional functions	100 BASE-TX/100BASE-FX (IEEE 802.3u)
	Quality of Service (QoS) prioritization (IEEE 802.1p)
	Energy-efficient Ethernet (IEEE 802.3az)
	10Base-T (IEEE 802.3)

## Security functions

Basic functions	Unmanaged switch
	Autonegotiation
	Store and Forward switching mode

## Electrical properties

Transmission medium	Copper
---------------------	--------

## Supply

Supply voltage (DC)	24 V DC
Supply voltage (AC)	24 V AC (50/60 Hz)
Supply voltage range	9 V DC ... 32 V DC
	18 V AC ... 30 V AC (50/60 Hz)
Power supply connection	Via COMBICON, max. conductor cross section 2.5 mm <sup>2</sup>
Residual ripple	3.6 V <sub>PP</sub> (within the permitted voltage range)
Max. current consumption	110 mA (at 9 V DC)
Typical current consumption	19 mA (at 24 V DC)

## Connection data

Connection method	Push-in spring connection
Conductor cross section, rigid	0.2 mm <sup>2</sup> ... 2.5 mm <sup>2</sup>
Conductor cross section, flexible	0.2 mm <sup>2</sup> ... 2.5 mm <sup>2</sup>
Conductor cross section AWG	24 ... 12
Conductor cross section, flexible, with ferrule, with plastic sleeve	0.25 mm <sup>2</sup> ... 2.5 mm <sup>2</sup>
Conductor cross section flexible, with ferrule without plastic sleeve	0.25 mm <sup>2</sup> ... 2.5 mm <sup>2</sup>
Stripping length	10 mm

## Ambient conditions

Degree of protection	IP30
Ambient temperature (operation)	-10 °C ... 60 °C
Ambient temperature (storage/transport)	-40 °C ... 85 °C
Altitude	2000 m (maximum)
Permissible humidity (operation)	5 % ... 95 % (non-condensing)
Permissible humidity (storage/transport)	5 % ... 95 % (non-condensing)
Shock (operation)	30g (EN 60068-2-27)
Vibration (operation)	in acc. with IEC 60068-2-6: 5g, 150 Hz
Air pressure (operation)	79 kPa ... 108 kPa up to 2000 m above mean sea level (Without derating)

1085039

<https://www.phoenixcontact.com/in/products/1085039>

Air pressure (storage/transport)	79 kPa ... 108 kPa up to 2000 m above mean sea level (Without derating)
----------------------------------	---

## Standards and regulations

Free from substances that could impair the application of coating	In acc. with VW specification
---	-------------------------------

## Approval data

### Conformity/Approvals

UL, USA / Canada	UL 61010-1, UL 61010-2-201, UL 62368-1 Class I, Div. 2, Groups A, B, C, D, T4 Class I, Zone 2, Group IIC, T4
FCC	Title 47 Part 15 Subpart B:2018 Class A

## EMC data

Conformance with EMC directives	EN 61000-6-2 EN 61000-4-2 (ESD) Criterion B
	EN 61000-6-2 EN 61000-4-3 (electromagnetic fields) Criterion A
	EN 61000-6-2 EN 61000-4-4 (EFT burst) Criterion A
	EN 61000-6-2 EN 61000-4-5 (surge) Criterion B
	EN 61000-6-2 EN 61000-4-6 (line noise immunity) Criterion A
	EN 61000-6-2 EN 61000-4-8 (electromagnetic fields) Criterion A
	EN 61000-6-2 Class A
Electromagnetic compatibility	Conformance with EMC Directive 2014/30/EU
Noise emission	EN 61000-6-4:2007 + A1:2011
Noise immunity	EN 61000-6-2:2005

## LED signaling

Status display	LEDs: U <sub>S</sub> , link and activity per port
----------------	---

# Industrial Ethernet Switch - FL SWITCH 1005N




1085039


<https://www.phoenixcontact.com/in/products/1085039>


## Approvals


 <b>IECEE CB Scheme</b> Approval ID: DK-91138-UL				
	Nominal Voltage $U_N$	Nominal Current $I_N$	Cross Section AWG	Cross Section $\text{mm}^2$
			-	-


 <b>EAC</b> Approval ID: RU *-DE.A*08.B.00731
---


 <b>IECEE CB Scheme</b> Approval ID: DK-91246-UL				
	Nominal Voltage $U_N$	Nominal Current $I_N$	Cross Section AWG	Cross Section $\text{mm}^2$
			-	-


 <b>UL Listed</b> Approval ID: FILE E 140403
--


 <b>cUL Listed</b> Approval ID: FILE E 140403
---

 <b>KC</b> Approval ID: R-R-PCK-1085039
---

 <b>cUL Listed</b> Approval ID: FILE E 238705
---

 <b>UL Listed</b> Approval ID: FILE E 238705
--

 <b>cUL Listed</b> Approval ID: FILE E 196811
---

 <b>UL Listed</b> Approval ID: FILE E 196811
--

<b>cULus Listed</b>
---------------------

# Industrial Ethernet Switch - FL SWITCH 1005N

1085039

<https://www.phoenixcontact.com/in/products/1085039>



# Industrial Ethernet Switch - FL SWITCH 1005N



1085039

<https://www.phoenixcontact.com/in/products/1085039>

## Classifications

### ECLASS

ECLASS-9.0	19170106
ECLASS-10.0.1	19170402
ECLASS-11.0	19170402

### ETIM

ETIM 8.0	EC000734
----------	----------

### UNSPSC

UNSPSC 21.0	43222600
-------------	----------

# Industrial Ethernet Switch - FL SWITCH 1005N



1085039

<https://www.phoenixcontact.com/in/products/1085039>

## Environmental Product Compliance

REACH SVHC

Lead 7439-92-1



1085039

<https://www.phoenixcontact.com/in/products/1085039>

## Accessories

### PCB connector

PCB connector - FKCT 2,5/ 3-ST KMGY BD:US,GND - 1087544

<https://www.phoenixcontact.com/in/products/1087544>

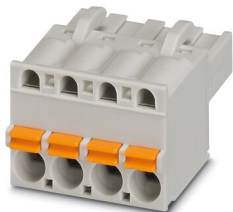


PCB connector, nominal cross section: 2.5 mm<sup>2</sup>, color: light grey, nominal current: 12 A, rated voltage (III/2): 320 V, contact surface: Tin, type of contact: Female connector, number of rows: 1, number of positions: 3, product range: FKCT 2,5/..-ST, pitch: 5 mm, connection method: Push-in spring connection, conductor/PCB connection direction: 0 °, locking clip: - Locking clip, plug-in system: COMBICON MSTB 2,5, locking: without, mounting: without, type of packaging: packed in cardboard

### PCB connector

PCB connector - FKCT 2,5/ 3-ST KMGY - 1998263

<https://www.phoenixcontact.com/in/products/1998263>



PCB connector, nominal cross section: 2.5 mm<sup>2</sup>, color: light grey, nominal current: 12 A, rated voltage (III/2): 320 V, contact surface: Tin, type of contact: Female connector, number of potentials: 3, number of rows: 1, number of positions: 3, number of connections: 3, product range: FKCT 2,5/..-ST, pitch: 5 mm, connection method: Push-in spring connection, conductor/PCB connection direction: 0 °, locking clip: - Locking clip, plug-in system: COMBICON MSTB 2,5, locking: without, mounting: without, type of packaging: packed in cardboard

# Industrial Ethernet Switch - FL SWITCH 1005N

1085039

<https://www.phoenixcontact.com/in/products/1085039>

## Mounting plate

Mounting plate - FL DIN-RAIL ADAPTER 22.5 - 1085485

<https://www.phoenixcontact.com/in/products/1085485>



The FL DIN-RAIL ADAPTER 22.5 is designed to allow products 22.5 mm wide to be mounted flush to a standard 35 mm DIN rail, in any orientation.

---

## Mounting plate

Mounting plate - FL PANEL ADAPTER 22.5 - 1085488

<https://www.phoenixcontact.com/in/products/1085488>



The FL PANEL ADAPTER 22.5 is designed to allow products 22.5 mm wide to be mounted flush to a panel, in any orientation.

# Industrial Ethernet Switch - FL SWITCH 1005N



1085039

<https://www.phoenixcontact.com/in/products/1085039>

## Surge protection device

Surge protection device - DT-LAN-CAT.6+ - 2881007

<https://www.phoenixcontact.com/in/products/2881007>



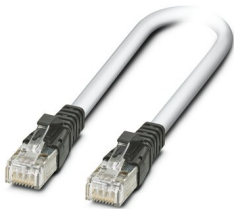
Surge protection in accordance with Class E<sub>A</sub> (CAT6<sub>A</sub>), for Gigabit Ethernet (up to 10 Gbps), token ring, FDDI/CDDI, ISDN, and DS1. Suitable for Power over Ethernet (PoE++ / 4PPoE) "Mode A" and "Mode B". RJ45 attachment plug with separate grounding cable and ground connection snap-on foot for NS 35 DIN rails.

---

## Patch cable

Patch cable - FL CAT5 PATCH 0,5 - 2832263

<https://www.phoenixcontact.com/in/products/2832263>



Patch cable, CAT5, assembled, 0.5 m

# Industrial Ethernet Switch - FL SWITCH 1005N

1085039

<https://www.phoenixcontact.com/in/products/1085039>

## Patch cable

Patch cable - FL CAT5 PATCH 1,0 - 2832276

<https://www.phoenixcontact.com/in/products/2832276>



Patch cable, CAT5, assembled, 1 m

---

## Patch cable

Patch cable - FL CAT5 PATCH 2,0 - 2832289

<https://www.phoenixcontact.com/in/products/2832289>



Patch cable, CAT5, assembled, 2 m

# Industrial Ethernet Switch - FL SWITCH 1005N



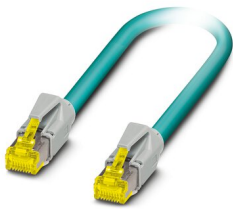
1085039

<https://www.phoenixcontact.com/in/products/1085039>

## Patch cable

Patch cable - NBC-R4AC-R4AC-IE8A/.../... - 1411854

<https://www.phoenixcontact.com/in/products/1411854>



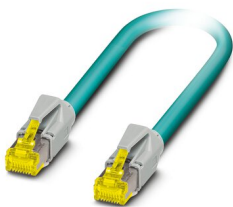
Patch cable, degree of protection: IP20, number of positions: 8, 10 Gbps, CAT6<sub>A</sub>, cable outlet: straight, Ethernet

---

## Patch cable

Patch cable - NBC-R4AC/10G-R4AC/10G-94F/2,0 - 1408360

<https://www.phoenixcontact.com/in/products/1408360>



Patch cable, CAT6<sub>A</sub>, 4-pair, shielded, connection not crossed (line), assembled at both ends with RJ45/IP20 connectors, outer sheath material: PUR, length: 2.0 m

# Industrial Ethernet Switch - FL SWITCH 1005N



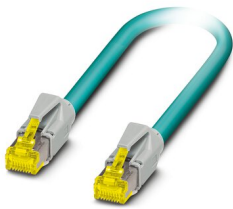
1085039

<https://www.phoenixcontact.com/in/products/1085039>

## Patch cable

Patch cable - NBC-R4AC/10G-R4AC/10G-94F/3,0 - 1408365

<https://www.phoenixcontact.com/in/products/1408365>



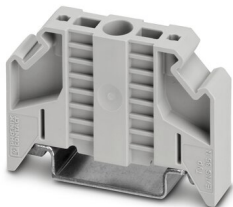
Patch cable, CAT6<sub>A</sub>, 4-pair, shielded, connection not crossed (line), assembled at both ends with RJ45/IP20 connectors, outer sheath material: PUR, length: 3.0 m

---

## End clamp

End clamp - E/NS 35 N - 0800886

<https://www.phoenixcontact.com/in/products/0800886>



End clamp, width: 9.5 mm, color: gray

# Industrial Ethernet Switch - FL SWITCH 1005N



1085039

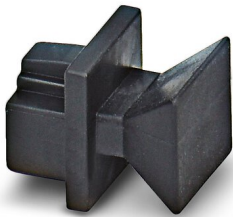
<https://www.phoenixcontact.com/in/products/1085039>

## Dust protection

Dust protection - FL RJ45 PROTECT CAP - 2832991

<https://www.phoenixcontact.com/in/products/2832991>

Dust protection caps for RJ45 socket



---

Phoenix Contact 2022 © - all rights reserved

<https://www.phoenixcontact.com>

PHOENIX CONTACT (I) Pvt. Ltd.

A-58/2, Okhla Industrial Area, Phase - II, New Delhi-110 020

+91.1275.71420

[info@phoenixcontact.co.in](mailto:info@phoenixcontact.co.in)